



# PRODUCT CATALOG

V 3.0



**DOOR GASKETS**  
**STRIP CURTAINS**  
**DOOR & FRAME PARTS**



**Direct Refrigeration Sales**  
(800) 455-1544  
support@directrefrigeration.com  
www.directrefrigeration.com



# WHY PARTNER WITH DRS?

**Direct Refrigeration Sales (DRS)** was founded in 2010. Our mission from day one — *to offer OEM quality products without the OEM price.* Our gaskets have machine-welded corners and are hand-trimmed to produce an excellent fit and finish.

DRS offers OEM quality parts and a comprehensive selection of strip curtain systems. Our white glove customer service and attention to detail sets us apart. If you are looking for a partner to support your needs for gaskets, parts, or strip curtains we would be honored to help you.

## **DIRECT REFRIGERATION SALES**

1420 Oak Industrial Ln, Cumming, GA 30041

(800) 455-1544

[support@directrefrigeration.com](mailto:support@directrefrigeration.com)

[www.directrefrigeration.com](http://www.directrefrigeration.com)



*DRS Gaskets & Strip Curtain material are proudly made in the USA!*



# TABLE OF CONTENTS

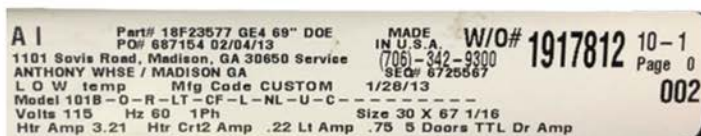
DRS Parts for Anthony Doors & Frames .....	1
DRS 5-PK & 10-PK Specials .....	8
DRS Parts for Hussmann Doors & Frames .....	10
DRS Parts for Commercial/Styleline .....	13
DRS Parts for Ardco/Gemtron .....	15
Walk-in Cooler/Freezer Parts .....	19
Common Gasket Profiles .....	21
DRS Gasket Roller Tool .....	25
DRS Gasket Profile Tool .....	26
Strip Curtains .....	27
Honeycomb .....	33
FlareSeal® Multi-Ring Seal .....	34



# DRS PARTS FOR ANTHONY DOORS & FRAMES

## Ordering Tips

Please provide a photo of the WO tag located on the top of the door. For further confirmation, identify the width of your gasket; 1-1/8" wide is an Aircell style, while 5/8" wide is an Anvil style.



### G101

1 1/8" wide - Aircell style with a magnet  
For various Anthony models e.g. 101B, 101X, 210X,  
ELM door models. 3 or 4 sided

---



### G102

5/8" wide - Anvil style with a magnet  
For various Anthony models e.g. 601B, 401B, 2200,  
6001 door models. 3 or 4 sided

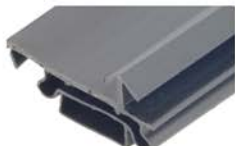
---



### G103

Double dart frame gasket  
For various Anthony models e.g. 1000 Series, 1KDB,  
1KDR door models

---



### G104

Single dart frame gasket  
For various Anthony models e.g. 1000 Series, 1KDB,  
1KDR

## IF YOU DO NOT HAVE A DOOR TAG:

Use the graphics to identify the correct gasket profile, then measure the outside-to-outside dimensions of the gasket to the nearest 1/16th.



**Aircell Style Gasket**  
**1 1/8" wide**

For various Anthony models e.g. 101X, 101B, ELM, 210X door models

**G101**



**Anvil Style Gasket**  
**5/8" wide**

For various Anthony models e.g. 601B, 0401, 2200, 3300, 6001 door models

**G102**



**Frame Gasket**  
**Double Dart**

For common Anthony door model 1000 series

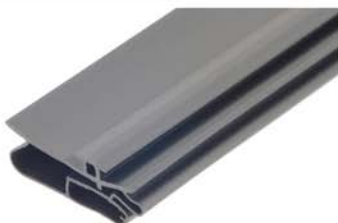
**G103**



**Frame Gasket**  
**Single Dart**

For common Anthony door model 1000 series

**G104**



**Aircell Style Gasket**  
**1 1/8" wide**

For various Anthony models e.g. 210Z / 213Z door models

**G105**

Gasket profiles G101 & G105 are similar. Please note the G101 has an arrow shaped dart and G105 has a flat shaped dart (as noted in the photo).

**G101**



**G105**





**DRS Door Sweep with Hardware, 38 5/8" wide**

For 3-sided, U-shaped glass doors, e.g. 213Z / 103B / ELM23 / 3300

**PN 10243B**



**Center Flap Seal Gasket**

**1" wide x 85" long**

Snap-in style with rigid back

**PN 10194**



**Center Flap Seal Gasket**

**1 3/8" wide**

63" long

85" long

**63"**

**PN 10211**

**85"**

**PN 10213**



**Center Flap Seal Gasket**

**1 3/16" wide**

63" long

85" long

**63"**

**PN 10166**

**85"**

**PN 10167**



**Center Flap Seal Gasket**

**73 1/16" long**

For Anthony Model 210Z door

**PN 10246**

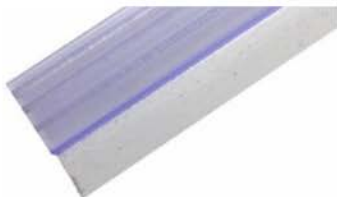


**Corner Bumper**

**1" Snap-on**

For Hill Phoenix refrigerator display case

**PN 10257**



**Vista B/W Clear Wiper  
73" long**

For Vista B and Vista W  
door models

**PN 10129**



**Electrical Access  
Hole Cover**

Black or Silver  
Special pricing on 5 &  
10 packs

**Black  
PN 10069**

**Silver  
PN 10085**



**Electrical Access  
Hole Cover**

Silver  
For Anthony model 210Z

**PN 10244**



**DRS Contact Plate  
Narrow, 1.5" wide**

30" long  
72" long

**30"  
PN 10125B**

**72"  
PN 10147B**



**DRS Contact Plate  
Wide, Long Mullion**

2.515" wide x 72" long

**PN 10123B**



**DRS Contact Plate  
Retainer Zipper Strip**

32" or 72" long  
Special pricing on 5 &  
10 packs

**32"  
PN 10118B**

**72"  
PN 10143B**



**DRS Torque Rod**  
**29" long**  
Special pricing on 5 &  
10 packs

**PN 10071**

---



**DRS Torque Master**  
**Silver**  
Special pricing on 5 &  
10 packs

**PN 10006**

---



**DRS Torque Master**  
**Black**  
Special pricing on 5 &  
10 packs

**PN 10072**

---



**DRS Hold Open**  
**Bracket Kit**  
**with Hardware**  
Special pricing on 5 &  
10 packs

**PN 10183B**

---



**DRS Hold Open**  
**Bracket**

**PN 10188**

---



**DRS Hold Open**  
**Hardware Kit**

**PN 10184B**





**Pivot Standoff**

**PN 10189**



**Pivot Standoff  
Screw**

**PN 10187**



**Oversized  
Pivot Standoff**

**PN 10192**



**Shoulder Bolt**

**PN 10004**



**Oversized  
Shoulder Bolt**

**PN 10108**



**Washer**  
For shoulder bolt

**PN 10190**



**Washer**  
For oversized  
shoulder bolt

**PN 10191**



**Slimline Handle Screw**

**PN 10104**



**Slimline Door Handle with Screws**

Black or Chrome  
Special pricing on 5 & 10 packs

**Black  
PN 10103B**

**Chrome  
PN 10140B**



**Slimline Door Handle Repair Kit**

Black or Chrome  
Ideal for the STRIPPED door handle (call for details)

**Black  
PN 10254B**

**Chrome  
PN 10255B**



**DRS Hinge Pin with Leads**

Black or Silver  
Special pricing on 5 & 10 packs

**Black  
PN 10099**

**Silver  
PN 10105**



**DRS Electrical Hinge Pin Receptacle Single Universal**

Special pricing on 5 & 10 packs

**PN 10097**



**DRS Electrical Hinge Pin Receptacle Double**

Special pricing on 5 & 10 packs

**PN 10100**

# DRS 5-PACK & 10-PACK SPECIALS



**Electrical Access  
Hole Cover**  
Black or Silver

Blk - PN 10069-5PK  
Blk - PN 10069-10PK  
  
Slv - PN 10085-5PK  
Slv - PN 10085-10PK



**DRS Contact Plate  
Retainer Zipper  
Strip**  
32" or 72" long

32"- PN 10118B-5PK  
32"- PN 10118B-10PK  
  
72"- PN 10143B-5PK  
72"- PN 10143B-10PK



**Slimline  
Door Handle  
with Screws**  
Black or Chrome

Blk - PN 10103B-5PK  
Blk - PN 10103B-10PK  
  
Chr - PN 10140B-5PK  
Chr - PN 10140B-10PK



**DRS Hinge Pin  
with Leads**  
Black or Silver

Blk - PN 10099-5PK  
Blk - PN 10099-10PK  
  
Slv - PN 10105-5PK  
Slv - PN 10105-10PK



**DRS Electrical  
Hinge Pin  
Receptacle  
Single Universal**

PN 10097-5PK  
PN 10097-10PK



**DRS Electrical  
Hinge Pin  
Receptacle  
Double**

PN 10100-5PK  
PN 10100-10PK



**DRS Torque Rod**  
29" long

**PN 10071-5PK**  
**PN 10071-10PK**

---



**DRS Left-Hinge Torque Rod**  
RL Door

**PN 10046-5PK**  
**PN 10046-10PK**

---



**DRS Bottom Hinge Socket Kit with Hardware**

**PN 10047B-5PK**  
**PN 10047B-10PK**

---



**DRS Torque Master**  
Silver

**PN 10006-5PK**  
**PN 10006-10PK**

---



**DRS Torque Master**  
Black

**PN 10072-5PK**  
**PN 10072-10PK**

---



**DRS Hold Open Bracket Kit with Hardware**  
Special pricing on 5 & 10 packs

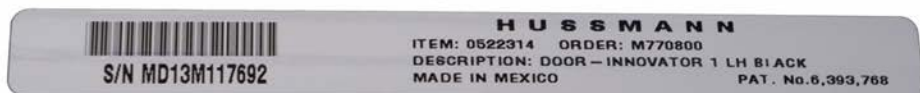
**PN 10183B-5PK**  
**PN 10183B-10PK**

# DRS PARTS FOR HUSSMANN DOORS & FRAMES

## Ordering Tips

Please use the door size and/or case model (RL or RLT):

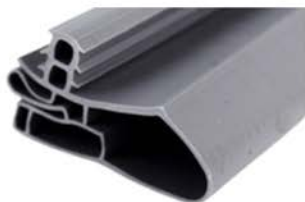
- The Hussmann **RL door** is approximately 30" x 65 1/2"
- The Hussmann **RLT door** is taller and approximately 30" x 73 1/8"
- Please provide the **ITEM number** as shown on the door tag



### Door Gasket Black

RL door: 30" x 65 1/2"  
RLT door: 30" x 73 1/8"

**G301**



### Door Gasket Gray

RL door: 30" x 65 1/2"  
RLT door: 30" x 73 1/8"

**G302**



### DRS Hold Open Bracket Kit with Shoulder Bolts

**PN 10007B**



**DRS Left-Hinge  
Torque Rod**  
RL Door - Special pricing  
on 5 & 10 packs

**PN 10046**

---



**DRS Left-Hinge  
Torque Rod**  
RLT Door

**PN 10165**

---



**DRS Right-Hinge  
Torque Rod**  
RL Door

**PN 10207**

---



**DRS Bottom Hinge  
Socket**

**PN 10047**

---



**DRS Bottom Hinge  
Socket Kit  
with Hardware**  
Special pricing on 5 &  
10 packs

**PN 10047B**

---



**DRS Top Hinge  
Socket**

**PN 10049**



**Socket Screw**  
For bottom & top  
hinge socket

**PN 10048**

---



**Top Hinge Kit**

**PN 10169B**

---



**Electrical Receptacle  
Black**  
For Innovator door

**PN 10180**

---



**Door Handle Kit**  
For Hussmann  
with hardware

**PN 10253B**

---



**Lower Bumper**  
For 5-door Hussmann  
refrigerator display

**PN 10256**

---

GOT QUESTIONS? WE CAN HELP!  
(800) 455-1544  
Support@DirectRefrigeration.com

# DRS PARTS FOR COMMERCIAL / STYLELINE

## Ordering Tips

Please provide the outside-to-outside dimensions of the gasket to the nearest 1/16" and select the gasket profile from below. The gasket profiles we carry for the Commercial/Styleline doors are G701 or G702.

Be sure to note whether the gasket is a screw-on or snap-in profile.



**Gasket**  
Screw-on style

**G701**



**Single Dart Gasket**  
Snap-in style

**G702**



**DRS Bottom  
Hold Open**  
With clip

**PN 10150**





**Top Hinge Kit**

**PN 10135**

---



**Oversized  
Shoulder Bolt**  
Frame side

**PN 10151**

---



**Bottom Hinge Kit**

**PN 10134**



**1420 Oak Industrial Ln  
Cumming, GA 30041**

**(800) 455-1544  
Support@DirectRefrigeration.com  
www.DirectRefrigeration.com**

# DRS PARTS FOR ARDCO / GEMTRON

## Ordering Tips

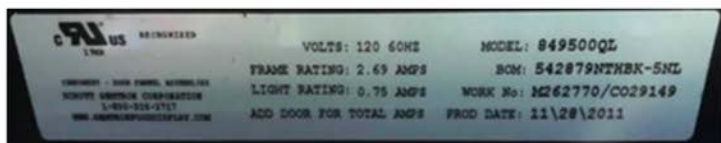
### Gemtron Doors

Please provide the outside-to-outside dimensions of the door to the nearest 1/16".



G201  
1 3/8"

### Gemtron Door Tag



### Ardco Doors

Please provide the outside-to-outside door dimensions to the nearest 1/16" and select the gasket profile, G201 or G202 from the photo provided.



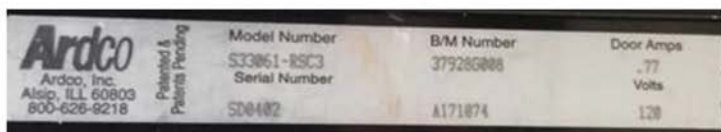
G201  
1 3/8"



G202  
1 7/8"

### Ardco Door Tag

Common Models: ETEC, ETEP, SWNG, 101G, Mline





**Ardco/Gemtron  
Gasket  
1 3/8" wide**

**G201**

---



**Ardco/Entertec/ETEC  
Gasket  
1 7/8" wide**

**G202**

---



**DRS  
Hold Open Bracket  
For Gemtron door top**

**PN 10076**

---



**DRS  
Top Hold Open Kit  
For Gemtron**

**PN 10195B**

---



**Gemtron  
Hold Open Bolt**

**PN 10077**

---



**Gemtron  
Hold Open Washer**

**PN 10079**

---



**Ardco/Gemtron  
Door Closer Kit**

**PN 10201**



**Top Hinge Pin**  
For Ardco/Gemtron door

**PN 10196**



**Gemtron Hinge Pin**  
With leads

**PN 10205**



**Gemtron Hinge Pin  
Double Receptacle**

**PN 10206**



**Torque Rod  
Gemtron Door**  
For Anthony style door

**PN 10071**



**Torque Master  
Gemtron Door**  
For Anthony style door

**PN 10072**



**Gemtron  
Contact Plate**

**PN 10112**



**Gemtron  
Contact Plate Retainer**

**PN 10114**



# WALK-IN COOLER & FREEZER PARTS

## Ordering Tips

### Step 1

Choose the gasket profile:

#### G501

Screw-on  
Compression Gasket  
No Magnet



#### G512

Triple Dart  
Bally,  
W.A. Brown



#### G516

Single Dart, Snap-in  
Kysor, Crown Tonka,  
Beverage Air



#### G521

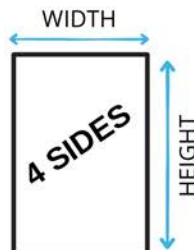
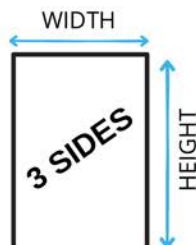
Screw-on w/ Magnet  
Traulsen, LaRosa,  
Leer



All gaskets are customizable for under-counter refrigerators and refrigerator drawers.

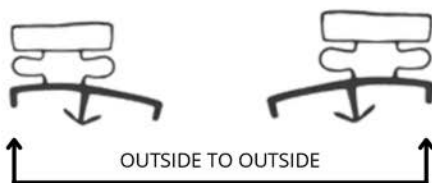
### Step 2

Identify the number of sides:



### Step 3

Measure the outside-to-outside gasket dimensions to the nearest 1/16":



Please confirm all details are correct before placing the order.

Custom gaskets are not eligible for returns or refunds.



**Screw-On  
Compression Gasket**  
With no magnet

**G501**



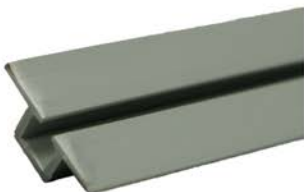
**Bally, WA Brown**  
Triple dart

**G512**



**Kysor, Crown Tonka,  
Beverage Air**  
Single dart snap-in

**G516**



**Retainer Walk-in  
Dart Track**  
For DRS G516 in 8'  
segments

**G599-000**



**Traulsen, Larosa,  
Leer Starrett**  
Screw-on with magnet

**G521**



**Door Sweep**  
**1 3/4" wide**  
3' or 4' lengths

**3 ft  
PN 10042**

**4 ft  
PN 10057**

# COMMON GASKET PROFILES



*DRS Gaskets are proudly made in the USA!*



**Aircell**  
**1 1/8" wide**  
Commonly used for  
Anthony doors

**G101**

---



**Anvil**  
**5/8" wide**  
Commonly used for  
Anthony doors

**G102**

---



**Frame Mounted Gasket**  
**Double Dart**  
Commonly used for  
Anthony doors

**G103**

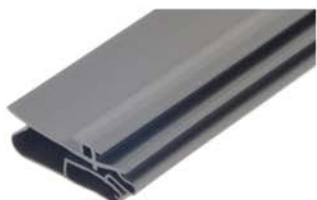
---



**Frame Mounted Gasket**  
**Single Dart**  
Commonly used for  
Anthony Doors

**G104**

---



**Aircell**  
**1 1/8" Wide**  
For various Anthony  
models e.g. 210Z / 213Z

**G105**





**Ardco/Gemtron  
Gasket Profile**  
1 3/8" wide

**G201**



**Eneritech/Ardco/ETEC**  
1 7/8" wide

**G202**



**Husmann Gasket  
Black**  
Door RL: 30" x 65 1/2"  
Door RLT: 30" x 73 1/8"

**G301**



**Husmann Gasket  
Gray**  
Door RL: 30" x 65 1/2"  
Door RLT: 30" x 73 1/8"

**G302**



**Randell**  
Commonly used on  
Silver King

**G328**



**Delfield**

**G602**



**Styleline**  
Screw-on

**G701**

---



**Styleline**  
Snap-in

**G702**

---



**Commonly used  
for True and  
Beverage Air**

**G185**

---



**True**

**G410**

---



**True**

**G411**

---



**True**

**G930**

---



**Screw-on  
Compression Gasket**  
No magnet

**G501**

---



**Bally, WA Brown**  
Triple dart snap-in

**G512**

---



**Kysor, Crown Tonka,  
Beverage Air**  
Single dart snap-in

**G516**

---



**Traulsen, Larosa,  
Leer Starrett**  
Screw-on with magnet

**G521**

**GOT QUESTIONS? WE CAN HELP!**  
**(800) 455-1544**  
**Support@DirectRefrigeration.com**

# DRS GASKET ROLLER TOOL

## Save Time, Money and Your Thumbs!

Our proprietary gasket installation tool features flat, wide (1¼") wheels.

Wider than the most popular gaskets, the wheel's surface makes for fast and easy gasket installation.



GASKET ROLLER

With the **DRS Gasket Roller Tool** you will:

- Increase productivity!
- Install more gaskets faster!
- Save the wear and tear on your fingers and thumbs!



Scan the QR CODE with your phone's camera to see the Gasket Roller Tool in action!



# GASKET REFERENCE TOOL

## Easily Identify the Gaskets You Need!

The **DRS Gasket Profile Reference Tool** is a great resource to identify the exact gasket that is required.

The ring contains an assortment of DRS gasket profiles so you can easily see which one will work for you.

### GASKET SAMPLE RING



GOT QUESTIONS? WE CAN HELP!

(800) 455-1544

[Support@DirectRefrigeration.com](mailto:Support@DirectRefrigeration.com)

# DRS STRIP CURTAINS & BRACKETS

## DRS Strip Curtain Systems

**Replacing individual strips is simple!**

There's no bracket system disassembly and reassembly needed. Each strip is pre-drilled and pre-cut for quick and easy installation on the DRS Bracket System.



**8" Low-Temp Smooth  
(clear)**



**8" Low-Temp Smooth  
(safety orange)**



**8" Low-Temp Ribbed  
(clear)**



**12" Low-Temp Smooth (clear)**



**12" Low-Temp Ribbed (clear)**



*DRS Strip Curtain material is proudly made in the USA!*

## Helpful Videos



**PRODUCT  
INFORMATION  
VIDEO (0:41)**

***Curious about installation?  
Wondering if DRS strips are right for you?***

Scan the QR Codes with your phone's camera to watch these quick and helpful videos.



**VIDEO  
INSTALLATION  
GUIDE (01:35)**

## DRS Bracket System

Ideal for Cooler/Freezer Doors and Cart Doors

Available in 1' and 2' sections



**8" Low-Temp Smooth (clear)**



**8" Low-Temp Ribbed (clear)**



## Universal Brackets

Ideal for Receiving Doors

Available in 3' and 4' sections



**12" Low-Temp Smooth (clear)**



**12" Low-Temp Ribbed (clear)**



## Strip Curtains in Common Sizes

### 8" Wide Smooth Strips (Strips Only)

SC08-RS64	Strip Curtain Replacement Strip - 8" wide x 64" long Smooth Low Temp, Pre-Cut/Punched
SC08-RS100	Strip Curtain Replacement Strip - 8" wide x 100" long Smooth Low Temp, Pre-Cut/Punched
SC08-RS120	Strip Curtain Replacement Strip - 8" wide x 120" long Smooth Low Temp, Pre-Cut/Punched
SC08-RS100-10PK	Strip Curtain Replacement Strip - 8" wide x 100" long Smooth Low Temp, Pre-Cut/Punched - 10 Pack
SC08-RS120-10PK	Strip Curtain Replacement Strip - 8" wide x 120" long Smooth Low Temp, Pre-Cut/Punched - 10 Pack

Also Available: 12" wide ribbed and smooth strips, 8" wide ribbed strips, and Safety Orange. Call DRS at (800) 455-1544 for part numbers and pricing.

## Strip Curtain Brackets

10126B	12" HD Strip Curtain Mounting Bracket Kit - includes (1) 12" HD bracket, (2) screws
10127B	24" HD Strip Curtain Mounting Bracket Kit - includes (1) 24" HD bracket, (4) screws
10237	Universal Bracket - Wall Mount Hardware - 3' section - 36"
10238	Universal Bracket - Wall Mount Hardware - 4' section - 48"



## DRS Strip Curtain Kits

Our strip curtain kits include the brackets, strips, and self-tapping screws. All kits come with an extra foot of bracket to provide overlap on each side of the door opening. To select the optimal kit for your application, all we need is the door opening dimensions.

Our standard configuration is the DRS bracket with 8" wide low-temp strips with 50% overlap. Additionally, we offer safety orange strips and kits with 100% overlap. For strip curtain kits with 12" wide strips, our standard offering is 33% overlap. We also offer 66% and 100% overlap options.

Common Sizes - Strip Curtain Kits	
SC08-60100-HD (door size 4' x 8')	DRS Strip Curtain Kit - 5' wide x 100" long strips - includes 9 low-temp strips, 5 feet of aluminum mounting brackets and 10 screws
SC08-72100-HD (door size 5' x 8')	DRS Strip Curtain Kit - 6' wide x 100" long strips - includes 11 low-temp strips, 6 feet of aluminum mounting brackets and 12 screws
SC08-84100-HD (door size 6' x 8')	DRS Strip Curtain Kit - 7' wide x 100" long strips - includes 13 low-temp strips, 7 feet of aluminum mounting brackets and 14 screws
SC08-60120-HD (door size 4' x 10')	DRS Strip Curtain Kit - 5' wide x 120" long strips - includes 9 low-temp strips, 5 feet of aluminum mounting brackets and 10 screws
SC08-72120-HD (door size 5' x 10')	DRS Strip Curtain Kit - 6' wide x 120" long strips - includes 11 low-temp strips, 6 feet of aluminum mounting brackets and 12 screws
SC08-84120-HD (door size 6' x 10')	DRS Strip Curtain Kit - 7' wide x 120" long strips - includes 13 low-temp strips, 7 feet of aluminum mounting brackets and 14 screws

Kits with the Universal Bracket and/or Safety Orange are also available.

## DRS Strip Curtain Rolls - Smooth

10060- Precut 64	8" Low-Temp Clear Replacement Strip Roll (1 Box = 150 ft) Pre-cut/Pre-punched at 64"	28 strips per roll (150 ft.)
10060- Precut 100	8" Low-Temp Clear Replacement Strip Roll (1 Box = 150 ft) Pre-cut/Pre-punched at 100"	18 strips per roll (150 ft.)
10060- Precut 120	8" Low-Temp Clear Replacement Strip Roll (1 Box = 150 ft) Pre-cut/Pre-punched at 120"	14 strips per roll (150 ft.)

Ribbed and Safety Orange Rolls are also available.



**GOT QUESTIONS? WE CAN HELP!**

(800) 455-1544

Support@DirectRefrigeration.com

# DRS Strip Curtains - Installed

**Before**



**After**



**Cart Door**



**Receiving Door**



# HONEYCOMB

DRS offers a wide variety of Honeycomb options; the most common sizes are listed below. For other sizes, please contact Team DRS at (800) 455-1544.



WHITE 1/8" cell	
1" x 4" x 48"	PN 10061
1" x 4.5" x 48"	PN 10088
1" x 6" x 48"	PN 10156



BLACK 1/8" cell	
1" x 4" x 48"	PN 10160
1" x 4.5" x 48"	PN 10161
1" x 6" x 48"	PN 10164



# FLARESEAL® MULTI-RING

## Get Leak-Free Flare Connections with FlareSeal® ... an Industry Changing Multi-Ring Seal!

The FlareSeal® Multi-Ring Seal is an engineered copper gasket with a special multi-ring design on the flare surface.



Developed specifically for the HVAC/R industry, FlareSeal® Multi-Ring Seal protects against the primary area of flare leaks...on the sealing surface.

FlareSeal® fits all common SAE flare connections for our industry. It not only provides a long term leak-free connection on new installations or products, but it also can be used to stop weeping connections in existing systems. **Once assembled, the FlareSeal® becomes the BEST long-term, leak-free flare connection in the industry!**

### Endless Applications!

- Pilot Lines
- Evaporator Pressure Regulators
- Hi-Low Pressure Controls
- Thermostatic Expansion Valves
- Filter Driers
- Oil Filters
- HVAC Mini-Splits
- LP Gas Lines



## Maximum Torque Settings

1/4" (-04)	13-17 ft-lbs
3/8" (-06)	24-31 ft-lbs
1/2" (-08)	36-45 ft-lbs
5/8" (-10)	45-60 ft-lbs
3/4" (-12)	66-88 ft-lbs



## Ordering Information

Size	FlareSeal Part Number	Box Qty 100 Part Number	Box Qty 50 Part Number	Box Qty 10 Part Number
1/4"	45FS-04-CLR 100	10208	-----	10232
3/8"	45FS-06-CLR 100	10209	-----	10233
1/2"	45FS-08-CLR 100	10240	-----	10234
5/8"	45FS-10-CLR 50	-----	10241	10235
3/4"	45FS-12-CLR	-----	10242	10236

\*Minimum order is box quantity.

For lower quantities please visit [www.FlareSeal.com](http://www.FlareSeal.com).

## Try our FlareSeal® Variety Pack

It's the perfect variety pack for the HVAC or Refrigeration Contractor!



Each FlareSeal® Variety Pack contains **10 each** of the 4 sizes:

1/4"	1/2"
3/8"	5/8"

PN 10210



GOT QUESTIONS? WE CAN HELP!

(800) 455-1544

Support@DirectRefrigeration.com



**1420 Oak Industrial Ln  
Cumming, GA 30041**

**[www.directrefrigeration.com](http://www.directrefrigeration.com)  
[support@directrefrigeration.com](mailto:support@directrefrigeration.com)  
(800) 455-1544**