



Door Gaskets | Strip Curtains | Door & Frame Parts

# Product Catalog V 2.0

OEM  
Quality  
without the  
OEM Price!



(800) 455-1544

[support@directrefrigeration.com](mailto:support@directrefrigeration.com)

[www.directrefrigeration.com](http://www.directrefrigeration.com)

# Why Purchase from DRS?

Direct Refrigeration Sales offers products equal to OEM quality at a fraction of the OEM price. Our customer service and attention to detail sets us apart. Our gaskets are produced to standards that equal or exceed the OEM standards for quality. Our gaskets have machine-welded corners exactly as OEM. The only thing not OEM about DRS is our price!



We guarantee a perfect fit and finish on your gaskets or other DRS products. **If you are not 100% satisfied with your purchase, we will offer a replacement free of charge or your money back.**



## **DIRECT REFRIGERATION SALES**

6065 Parkway North Drive #500

Cumming, GA 30040

(800) 455-1544

[support@directrefrigeration.com](mailto:support@directrefrigeration.com)

[www.directrefrigeration.com](http://www.directrefrigeration.com)

# Table of Contents

DRS Parts for Anthony Doors ..... 2

DRS Parts for Anthony Frames ..... 5

DRS Parts for Hussmann Doors & Frames ..... 8

DRS Parts for Commercial/Styleline ..... 11

DRS Parts for Ardco/Gemtron ..... 12

Strip Curtains ..... 15

Honeycomb ..... 17

Walk-in Cooler/Freezer Parts ..... 18

FlareSeal® Multi-Ring Seal ..... 19

DRS Gasket Profile Reference Tool ..... 21

Common Gasket Profiles ..... 22

DRS Gasket Roller Tool ..... 26





## DRS Parts for Anthony Doors

### ORDERING TIPS

- 1.) Please provide us with a photo of the W/O# sticker
- 2.) Measure the outside dimension of the "gasket"

The W/O# sticker is located at the top of the Anthony door. If you are unable to find it, please use our DRS Gasket Ring to select the gasket profile that you need. Newer doors will likely have a 1 1/8" wide gasket (DRS profile 101); and doors from 1996 and earlier will likely be the skinny 5/8" wide gasket (DRS profile 102). You may also find doors with a single dart "frame gasket" (DRS profile 104) or doors with a double dart "frame gasket" (DRS profile 103).



**Aircell Style Gasket**      G101  
**1 1/8" wide**



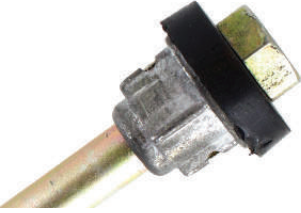
**Anvil Style Gasket**      G102  
**5/8" wide**



**DRS Hold Open  
Bracket Kit  
with Hardware**      PN 10183B



**DRS Hold Open  
Hardware Kit**      PN 10184B



**DRS Torque Rod**

PN 10071



**Electrical Access  
Hole Cover**

Silver  
PN 10085

Black  
PN 10069



**Vista B Clear Wiper**  
*(specify door height)*

PN 10129



**DRS Hinge Pin  
with Leads**

Silver  
PN 10105

Black  
PN 10099



**Slimline Door Handle  
with Screws**

Chrome  
PN 10140B

Black  
PN 10103B



Center Flap  
Seal Gasket  
1 3/8" W

PN 10211  
63" L  
  
PN 10213  
85" L

---



Center Flap  
Seal Gasket  
1 3/16" W x 65" L

PN 10166

---



Center Flap  
Seal Gasket  
1 3/16" W x 85" L

PN 10167

---



Center Flap Seal Gasket  
Snap-In style w/ rigid back  
1" W x 85" L

PN 10194

---



Vista C Wiper Gasket  
Available in Grey or  
Black (Call for details)

PN VC-WPR

## DRS Parts for Anthony Frames



Frame Gasket  
Double Dart

G103



Frame Gasket  
Single Dart

G104



DRS Torque Master

Silver  
PN 10006



DRS Torque Master

Black  
PN 10072



DRS Contact Plate  
1.50" wide

Narrow/Short  
Narrow/Long

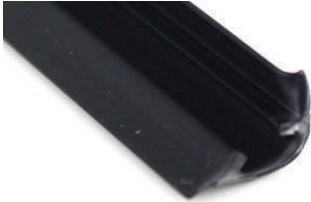
PN 10125B  
PN 10147B



DRS Contact Plate  
Wide/Long Mullion  
2.515" wide

PN 10123

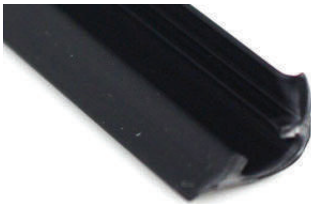
---



DRS Contact Plate  
Retainer Zipper Strip  
Short

PN 10118B

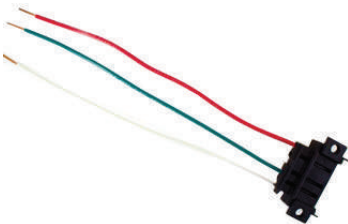
---



DRS Contact Plate  
Retainer Zipper Strip  
Long

PN 10143B

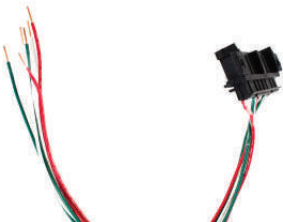
---



DRS Electrical  
Hinge Pin  
Receptacle Single  
Universal

PN 10097

---



DRS Electrical  
Hinge Pin  
Receptacle Double

PN 10100



Pivot Standoff

PN 10189



Pivot Standoff  
Screw

PN 10187



Oversized  
Pivot Standoff

PN 10192



Shoulder Bolt

PN 10004



Shoulder Bolt  
Washer

PN 10190



Oversized  
Shoulder Bolt

PN 10108



Oversized  
Shoulder Bolt Washer

PN 10191

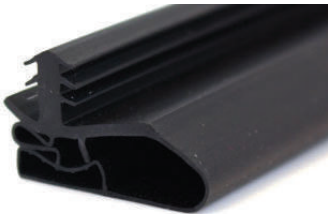
## DRS Parts for Hussmann Doors & Frames

### ORDERING TIPS

Please use the door size and/or case model (RL or RLT):

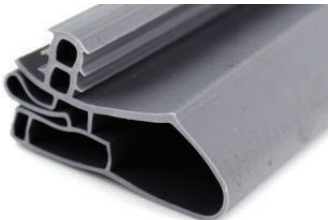
The Hussmann RL door is approximately 30 x 65 1/2

The Hussmann RLT door is taller and approximately 30 x 73 1/8



**Door Gasket  
Black**

**G301**



**Door Gasket  
Gray**

**G302**



**DRS Hold Open  
Bracket Kit  
with Shoulder Bolts**

**PN 10007**



DRS Left-Hinge  
Torque Rod  
RL Door Only

PN 10046

---



DRS Left-Hinge  
Torque Rod  
RLT Door Only

PN 10165

---



DRS Right-Hinge  
Torque Rod  
RL Door

PN 10207

---



DRS Bottom Hinge  
Socket

PN 10047

---



Torsion Rod  
Field Repair Kit

PN 10144



Female Wire Harness      PN 10180



Socket Screw  
for Bottom and  
Top Socket Plate      PN 10048



Top Socket Plate      PN 10049



Top Hinge Kit      PN 10169B

Call DRS  
and experience  
first-hand our  
**SERVICE & QUALITY!**  
**(800) 455-1544**

## DRS Parts for Commercial/Styleline

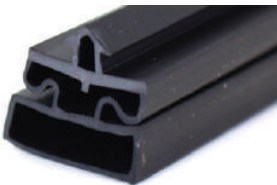
### ORDERING TIPS

Please provide us with a picture of the door tag that includes the model and serial number. This tag is typically located on the frame. Be sure to note whether the gasket is a screw-on or snap-in profile.



**Gasket  
Screw-on style**

G701



**Single Dart Gasket  
Snap-in style**

G702



**DRS Bottom  
Hold Open w/ Clip**

PN 10150



**Top Hinge Kit**

PN 10135



**Oversized Shoulder  
Bolt (frame side)**

PN 10151



**Bottom Hinge Kit**

PN 10134



## DRS Parts for Ardco/Gemtron

### ORDERING TIPS

Gaskets for Ardco/Entertech/ETEC/Gemtron - These older doors can be more difficult to cross-reference, so please use the outside dimensions of the door size to the nearest 1/16th of an inch (for example: 29 5/16" x 63 1/16"). Please take a photo of the BM# on the Ardco door. Also, note if the gasket is an Ardco/Entertec/ETEC model - DRS profile 202.



Ardco/Gemtron  
Gasket  
(1 3/8" wide)

G201



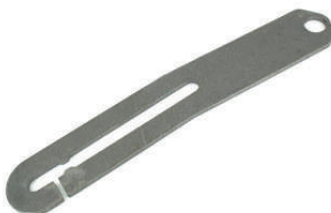
Ardco/Entertec/ETEC  
Gasket  
(1 7/8" wide)

G202



DRS Hold Open  
Bracket for Gemtron  
Door - Top

PN 10076



DRS Hold Open  
Bracket for Gemtron  
Door - Bottom

PN GM-H0-2



**Ardco/Gemtron  
Door Closer Kit**

PN 10201



**Gemtron Hinge Pin  
with Leads**

PN 10205



**Gemtron  
Contact Plate**

PN 10112



**Gemtron  
Contact Plate  
Retainer**

PN 10114



**Gemtron  
Hold Open Bolt**

PN 10077



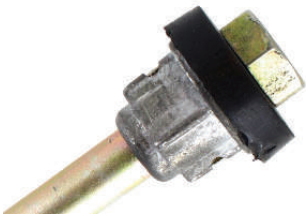
**Gemtron Hold Open Washer** PN 10079

---



**Top Hinge Pin for Ardco/Gemtron Door** PN 10196

---



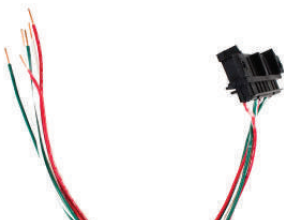
**Torque Rod for Gemtron Door (Anthony style door)** PN 10071

---



**Torque Master for Gemtron Door (Anthony style door)** PN 10072

---



**Gemtron Hinge Pin Receptacle (double)** PN 10206

## Strip Curtains

**DRS offers a wide variety of complete Strip Curtain Systems and solutions.** Popular applications include: Walk-in Coolers/Freezers, Receiving Doors, and Shopping Cart Doors.

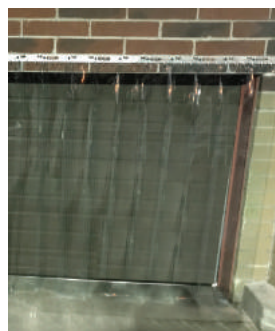
### Walk-in Cooler/Freezer



### Receiving Door



### Shopping Cart Door



## DRS Bracket Systems

Ideal for cooler/freezer doors and cart doors.

*Replacing individual strips is simple!*

There's no bracket system disassembly and reassembly needed. Each strip is pre-drilled and pre-cut for quick and easy installation on the DRS Bracket System.



8" Low-Temp Smooth (clear)



8" Low-Temp Ribbed (clear)



8" Low-Temp Smooth (orange)



## Universal Bracket Systems

Ideal for receiving doors or other applications with 12" wide strips. Brackets are available in 3' or 4' segments and can be merged for applications of any size.

12" Universal Smooth (clear)

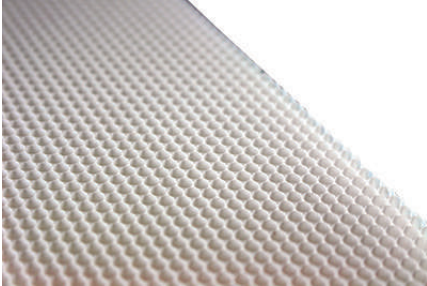


12" Universal Ribbed (clear)



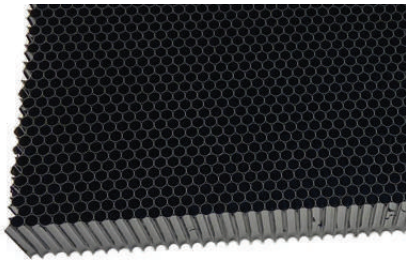
**All DRS strips are pre-drilled at 2" on center** and are compatible with the DRS Heavy-Duty Aluminum Bracket System and Universal Bracket systems. Standard lengths are 64" - 100" - 120" - 144". *Custom lengths are available.*

DRS offers a wide variety of Honeycomb options; the most common sizes are listed below. For custom sizes, please contact Team DRS at 800-455-1544.



### Honeycomb White, 1/8" cell

1" x 4" x 48"	PN 10061
1" x 4.5" x 48"	PN 10088
1" x 6" x 48"	PN 10156



### Honeycomb Black, 1/8" cell

1" x 4" x 48"	PN 10160
1" x 4.5" x 48"	PN 10161
1" x 6" x 48"	PN 10164

**IN STOCK**  
& Ships within  
**1** BUSINESS  
DAY!

## Walk-in Cooler/Freezer Parts



**Door Sweep**

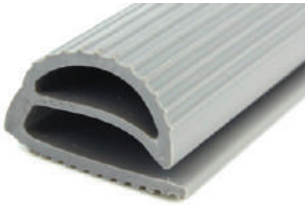
**3 foot**

**PN 10042**

**4 foot**

**PN 10057**

---



**Screw-On  
Compression Gasket  
with No Magnet**

**G501**

---



**Bally, WA Brown  
Triple Dart**

**G512**

---



**Kysor, Crown Tonka,  
Beverage Air  
Single Dart Snap-in**

**G516**

---



**Traulsen, Larosa,  
Leer Starrett  
Screw-on with Magnet**

**G521**



## FlareSeal® Multi-Ring Seal

**Get Leak-Free Flare Connections with FlareSeal®  
...an Industry Changing Multi-Ring Seal!**



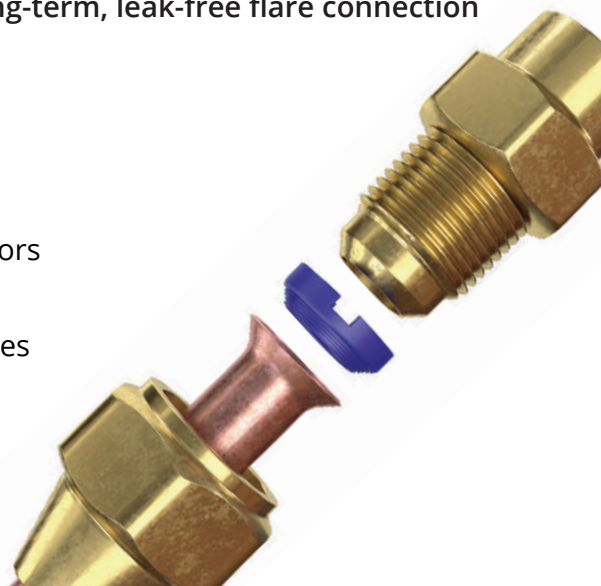
The FlareSeal® Multi-Ring Seal is an engineered copper gasket with a special multi-ring design on the flare surface.

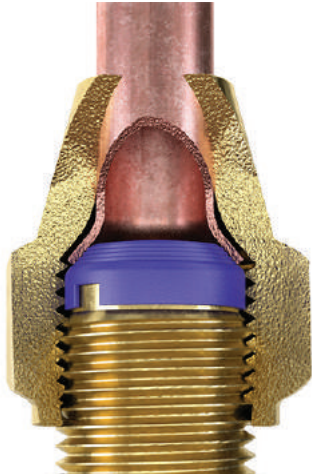
Developed specifically for the HVAC/R industry, FlareSeal® Multi-Ring Seal protects against the primary area of flare leaks...on the sealing surface.

FlareSeal® fits all common SAE flare connections for our industry. It not only provides a long term leak-free connection on new installations or products, but it also can be used to stop weeping connections in existing systems. **Once assembled, the Flare-Seal® becomes the BEST long-term, leak-free flare connection in the industry!**

### *Endless Applications!*

- Pilot Lines
- Evaporator Pressure Regulators
- Hi-Low Pressure Controls
- Thermostatic Expansion Valves
- Filter Driers
- Oil Filters
- HVAC Mini-Splits
- LP Gas Lines





## Maximum Torque Settings

1/4" (-04) 13-17 ft-lbs

3/8" (-06) 24-31 ft-lbs

1/2" (-08) 36-45 ft-lbs

5/8" (-10) 45-60 ft-lbs

3/4" (-12) 66-88 ft-lbs



## Ordering Information

Size	Part Number	Box Qty*
1/4"	45FS-04-CLR	100
3/8"	45FS-06-CLR	100
1/2"	45FS-08-CLR	100
5/8"	45FS-10-CLR	50
3/4"	45FS-12-CLR	50

\*Minimum order is box quantity.

For lower quantities please visit [www.FlareSeal.com](http://www.FlareSeal.com)

## Try Our Mini-Split Kit!

It's the perfect variety pack for the HVAC or Refrigeration contractor!



## DRS Gasket Profile Reference Tool

The **DRS Gasket Ring** is a great tool to identify the exact gasket that is required. The ring contains an assortment of DRS gaskets so that you can easily see which one will work for you.

Please contact DRS to order the Gasket Ring at no charge by calling (800) 455-1544.



## Common Gasket Profiles



Aircell 1 1/8" Wide  
(commonly used for  
Anthony Doors) G101



Anvil 5/8" Wide  
(commonly used for  
Anthony Doors) G102



Frame Gasket -  
Double Dart  
(commonly used for  
Anthony Doors) G103



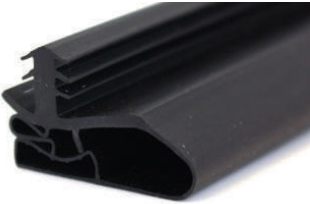
Frame Gasket  
(commonly used for  
Anthony Doors) G104



Ardco/Gemtron  
Gasket Profile  
(1 3/8" wide) G201



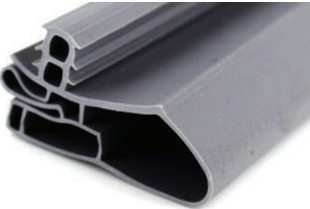
Enertech/Ardco/ETEC  
(1 7/8" wide) G202



Husmann Gasket  
Black

G301

---



Husmann Gasket  
Gray

G302

---



Commonly used for  
True, Beverage Air

G185

---



True

G410

---



True

G411

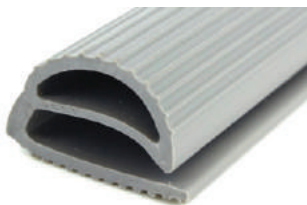
Common Gasket Profiles



True

G930

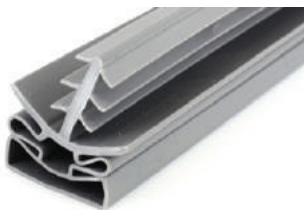
---



Screw-On  
Compression Gasket  
with No Magnet

G501

---



Bally, WA Brown  
Triple Dart

G512

---



Kysor, Crown Tonka,  
Beverage Air  
Single Dart Snap-in

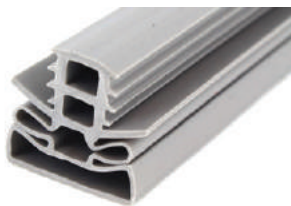
G516

---



Traulsen, Larosa,  
Leer Starrett  
Screw-on with Magnet

G521



Delfield

G601

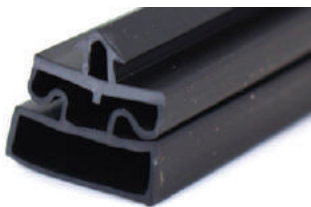
---



Styleline

G701

---



Styleline

G702

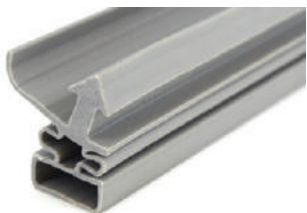
---



Randell

G820

---



Commonly Used on  
Silver King

G328

# DRS Gasket Roller Tool

PN GSKT ROLLER



## Save Time, Money...and Your Fingers!

Our proprietary gasket installation tool features flat, wide (1¼") wheels. Wider than the most popular gaskets, the wheel surface makes for fast and easy gasket installation.

DRS Gasket Roller Tool

- Increase productivity!
- Install more gaskets faster!
- Save the wear and tear on your fingers and thumbs!

